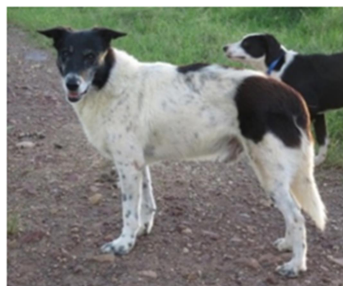
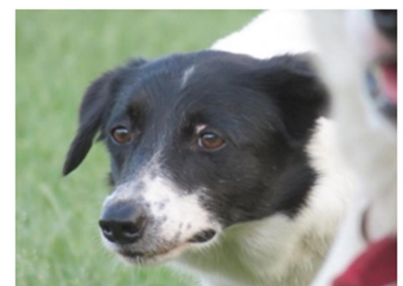


RC Nina (QCD 1902)
DOB: 17/02/2013


PARENTS	GRANDPARENTS	G GRANDPARENTS	G G GRANDPARENTS	G G G GRANDPARENTS		
SIRE: Lookerbie Goolie Reg No.: QCD0993 Colour: White & Black	Borilla Creek Laddie Reg No.: QCD0528 Colour: Black & White	Glen (Imp Scot) 236832 QCD0722 Black & White	Glen 167577	Lad 133656 Scot.Nat.Dr.Ch Liz 156824		
		Toolangie Zoe QCD0215	Maud 221161	Moss 189646 189646 Jill 192755		
	Lookerbie Miss Muffet Qld Ch Reg No.: QCD0097 Colour: White & Black	Parrs Magic Aust CH QCD0095 Black & White	Windeyer Cover (Governor) Q1899	Southern Speck	Princes Clyde 8381 Tungali Tess QCD0060	
		Greenwoods Meg QCD0096 Black & White	Derrimar Jillian N7403	Windeyer Top Dog N023 Windeyer Missie N6525	Bredbo Curley 7876 Glensloy Mist 7280	
DAM: Wilderness Daisey Reg No.: QCD1334 Colour: White & Black	Lookerbie Toby Reg No.: QCD0787 Colour:	Lookerbie Clyde	Borilla Creek Laddie QCD0528 Black & White	Rossters Snip N7544 Derrimar Diana N6634		
		Lookerbie Sporan	Parrs Nikki Q2540 Black & White	Sevils Bill 7689 Wondara Dai 8042		
	Jacksons Sister Reg No.: QCD2066 Colour: Black & White	Princes Toby	Princes Clyde 8381	Glen (Imp Scot) 236832 QCD0722	Sorrego Joe 4524 Tungali Sue	
			Princes Fame	Greenwoods Meg QCD0096 Black & White	Glen 167577 Maud 221161	
		Jacksons Lara	Princes Dot Q2696	Princes Clyde 8381	Tungali Tess QCD0060	Tungali Keith 9723
			Princes Dot Q2696	Princes Fame	Sevils Bill 7689 Wondara Dai 8042	Rosedale Lady 7164

Sire:
 Lookerbie Goolie

Dam:
 Wilderness Daisey


Nina is one of Robert's go to girls. As we expected from the mating – Nina has a great wide cast, speed and agility to work sheep and cattle with ease. We have retained three from this litter – Nina, Rose and Winston who all prove to be handy paddock and trial dogs with the fantastic work ethic of their father, mixed with a little tenaciousness of their mother. All with big harts and a willingness to please, you cannot offend these dogs.